

▶ QUALITY, INTEGRITY AND INNOVATIVE DESIGN

**Dilbeau**®

DUMP BODY MANUFACTURER

INCREASE YOUR VERSATILITY | PROFITABILITY

**Bibeau** is better! *HERE'S why :*

▶ **BIBEAU DUMP BODIES ARE BETTER BY DESIGN!**  
**ALL BIBEAU DUMP BODIES ARE CROSSMEMBERLESS AND HAVE BEEN FOR 35 YEARS.**

**MORE PROFIT** *Lighter weight = more payload.*

**LONGER LIFE CYCLE** *No floor washboard (cause of premature wear and tear).*

**FEWER DINGS AND DENTS** = *The floor flexes upon impact.*

**VERSATILITY** = *Rugged work one day / Haul with maximum payload the next.*

**CLEAN UNDER-STRUCTURE** = *No material hang-up, less rust and corrosion.*

**BIBEAU DUMP BODIES OFFER YOU EVEN MORE!**

- Sides are spring loaded to better handle the load stress.
- Built-in conduits for easy hook-up of heat.
- The empty body rests on rubber shock-absorbing bumpers.
- Lower mounting height, result more stability.
- Smaller doghouse reduces material hang-up, helps with weight distribution.
- Trunion mounted hoist offers additional stability.
- Door hinges specifically designed to prevent sagging due to linkage wear.
- Reliable "over-center" type door latching system ready for air actuation.

**BIBEAU DUMP BODIES ARE BUILT TO LAST AND LOOK GOOD FOR A LONG TIME!**

- Built exclusively with the best quality raw material.
- Welds are continuous throughout.
- Shot blasted and primed in a controlled environment.

**Consistency  
you can trust!**

With BIBEAU's innovative tru-weight program, each BIBEAU dump body is individually weighed during the final stage inspection. To ensure precision, we use a sensitive digital scale certified within 10 pounds!



*Laser cutting  
technology  
providing  
outstanding  
precision*



*Welds are  
continuous  
throughout*



*Shot blasted  
in a controlled  
environment*



*Primed and  
inspected to  
ensure quality  
consistency*



*Sides are spring  
loaded to better  
handle the load  
stress*



*Dump body rests  
on rubber bumpers  
preventing anno-  
ying rattles when  
empty*



*Built-in conduits  
for easy hook-up  
of heat*



*Door hinges speci-  
fically designed  
to prevent  
sagging due to  
linkage wear*



There is a **BIBEAU** dump body for YOUR application!



# BFL Series

BFL-S



BFL-HD



Bodies illustrated with options

*When ruggedness and light weight must be combined, the BFL is without a doubt the original and the reference point in the industry (available since 1988). The BFL series has maintained its popularity by offering substantial weight savings while preserving its impressive ability to resist dents & wear.*

## STANDARD SIZES

- Body lengths : 13'0" to 21'6"
- Side heights : 36" to 60"
- Door heights : 42" to 66"
- Hoist bracket : 5.5" to 7.5"
- Capacity : 8 to 30 cubic yards
- Approx. weight : 3930 lbs  
(based on 15'0 x 48" x 60")

## TECHNICAL INFORMATION

Construction	Material	BFL-HD	BFL-S
Side :	AR500	1/8"	5/32"
Front :	AR500	1/8"	1/8"
Floor :	AR450	3/16"	3/16"
Door :	AR450	3/16"	3/16"
Longsills :	AR250	3/16"	3/16"

See page 1 for more Bibeau advantages



# IBMT Series

BMT-S



BMT-400



Bodies illustrated with options

## WHEN YOUR NEED FOR STRENGTH SURPASSES YOUR NEED FOR EXTRA PAYLOAD.

Heavier nose | Heavier floor | Heavier sides | Heavier door

*Without a doubt : Tougher to wear, tougher to tear!*

### STANDARD SIZES

- Body lengths : 13'0" to 21'6"
- Side heights : 36" to 60"
- Door heights : 42" to 66"
- Hoist bracket : 5.5" to 7.5"
- Capacity : 8 to 30 cubic yards
- Approx. weight : 4955 lbs  
(based on 15'0 x 48" x 60")

### TECHNICAL INFORMATION

Construction	Material	BMT-400	BMT-S
Side :	AR450	3/16"	1/4"
Front :	AR450	3/16"	3/16"
Floor :	AR450	1/4"	1/4"
Door :	AR450	1/4"	1/4"
Longsills :		1/4"	1/4"

See page 1 for more Bibeau advantages



# Bibeau®



Body illustrated with options

**EL-188  
and  
EL-250**

If your application requires an elliptical design, the EL series built of AR450 is for you.

With its 3/16" body shell, the EL-188 maximizes the payload/strength ratio. As for the EL-250, its 1/4" construction significantly increases its capability to resist abuse.

## STANDARD SIZES

- **Body lengths :** 13'0" to 21'6"
- **Side heights :** 48" and 54"
- **Door heights :** 54" and 60"
- **Hoist bracket :** 5.5" to 7.5"
- **Capacity :** 8 to 30 cubic yards
- **Approx. weight :** 3996 lbs EL-188  
4723 lbs EL-250  
(based on 15'0 x 48" x 60")



Body illustrated with options

**M0  
and  
M1**

## Getting it done for less!

Not all applications require the "heavy duty" factor.

The "M" series could be the right body for you.

The 1/4" AR200 floor provides for a better than average wear & tear factor.

The M0 is the lightest and most economical of its category (sand & gravel).

The M1 offers a heavier construction for more demanding tasks (moderate excavating).

## STANDARD SIZES

- **Body lengths :** 12'0" to 21'6"
- **Side heights :** 36" and 60"
- **Door heights :** 42" and 66"
- **Hoist bracket :** 5.5" to 7.5"
- **Capacity :** 8 to 30 cubic yards
- **Approx. weight :** 4370 lbs M0  
4870 lbs M1  
(based on 15'0 x 48" x 60")

## TECHNICAL INFORMATION

Construction	Material	EL-188	EL-250
Side :	AR450	3/16"	1/4"
Front :	AR450	3/16"	1/4"
Floor :	AR450	3/16"	1/4"
Door :	AR450	3/16"	1/4"
Longsills :	AR450	3/16"	3/16"

See page 1 for more Bibeau advantages

## TECHNICAL INFORMATION

Construction	Material	M0	M1
Side :	44W	10ga.	3/16"
Front :	44W	10ga.	3/16"
Floor :	AR200	1/4"	1/4"
Door :	44W	3/16"	1/4"
Longsills :	44W	1/4"	1/4"

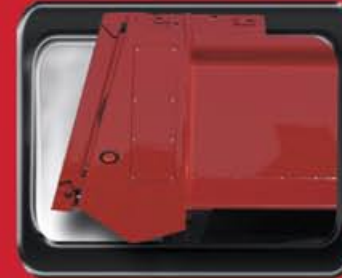
See page 1 for more Bibeau advantages



# ▶ CUSTOMIZE YOUR DUMP BODIES WITH OUR OPTIONS AND ACCESSORIES

## Options and Accessories :

- 45 degree bumper
- "Hi-lift" tailgate
- Barn door (swing gate)
- Water tight tailgate
- Front cut corners
- Flat front
- Flat front (external cylinder mount)
- Pin to pin cylinder mount
- Tapered sides
- Installation kit, hardware and parts
- Coal door
- Complete tarp systems
- Floor and side overlays
- Cab shield 12" to 36"
- Asphalt apron
- Inside steps
- Ladder
- LED light kits
- Heat kit for emission ready 07 trucks



45 DEGREE BUMPER



"HI-LIFT"



TAPERED SIDES



FLAT FRONT



BARN DOOR



FRONT CUT CORNERS (45 DEGREE)



COAL DOOR

# Dibeau®

	OPTIONS	M0	M1	ELLIPTICAL	BFL	BMT
DOOR	Slanted door	STD	STD	0	STD	STD
	Straight door	0	0	STD	0	0
	Barn door (swing gate)	0	0	X	0	0
	"Hi-lift" tailgate	X	0	0	0	0
	Double acting door	0	0	X	0	0
	Automatic door	X	0	X	0	0
	Water tight door	0	0	X	0	0
FRONT	Flat front	0	0	0	0	0
	Pin to pin cylinder mount	X	X	X	0	0
	Front cut corners	0	0	X	0	0
SIDES	Smooth sides	X	X	STD	STD BFL-S	STD BMT-S
	Side posts	STD	STD	X	STD BFL-HD	STD BMT-400
	Tapered sides (60" to 48")	X	X	X	0	0
OTHERS	102" wide	0	0	X	0	0
	45 degree bumper	X	X	0	0	0
	AR450 overlay (floor-sides)	X	0	X	X	0
	Installed coal door	0	0	0	0	0
	One piece AR450 floor	X	0	X	STD	STD
	Roll-off (A frame mounted)	X	X	X	0	0

Important : Certain manufacturing options are not compatible with one another. For more information, call BIBEAU or your nearest BIBEAU distributor.





**Bibeau**<sup>®</sup>



*Also available class 1 to 7 truck bodies*

**Groupe Bibeau inc.**

**Tel: 450.889.5505**

**Fax: 450.889.8166**

**[www.groupebibeau.com](http://www.groupebibeau.com)**